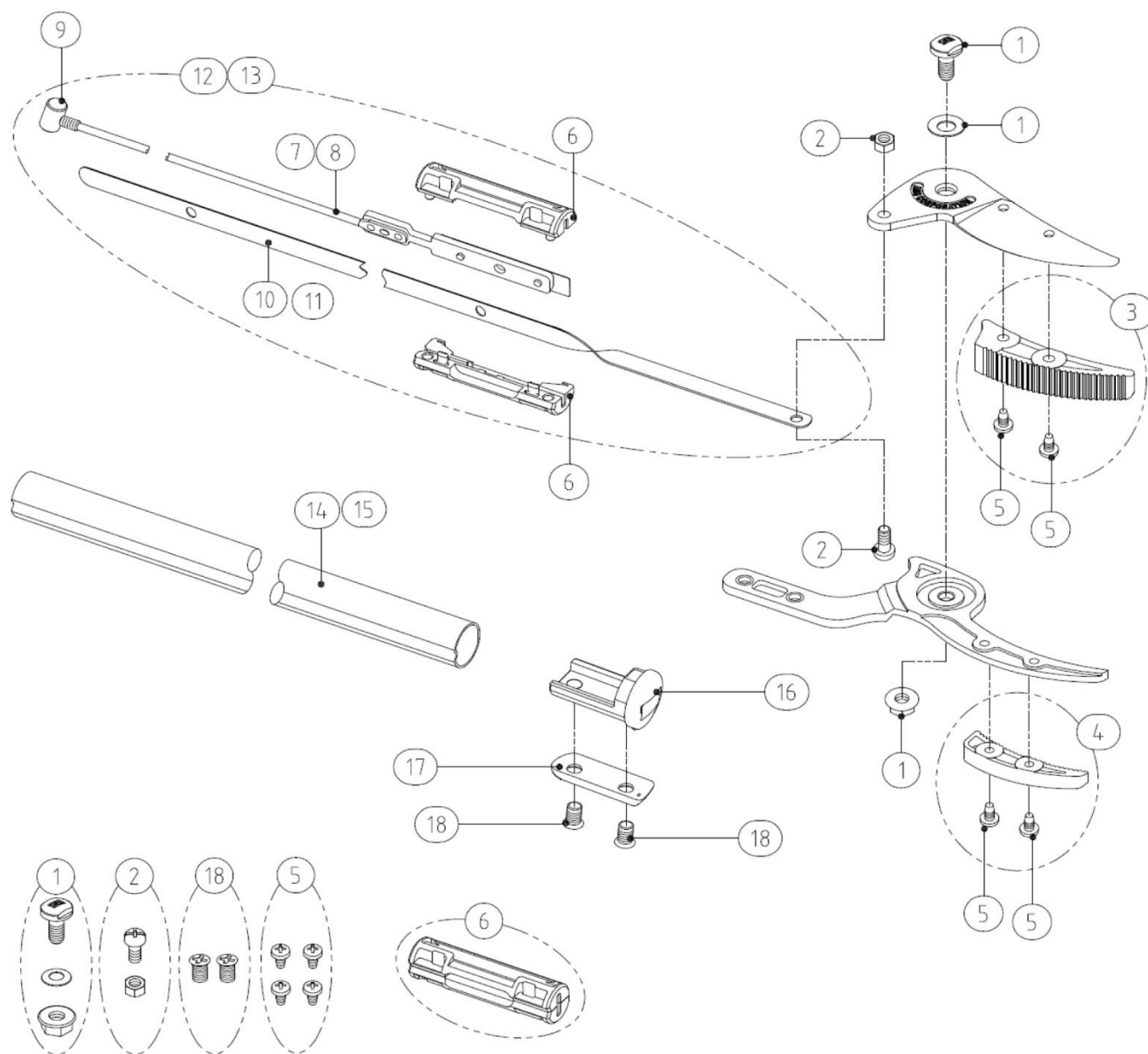


Parts Diagram for AR160ZF Series Long Arm Pruners

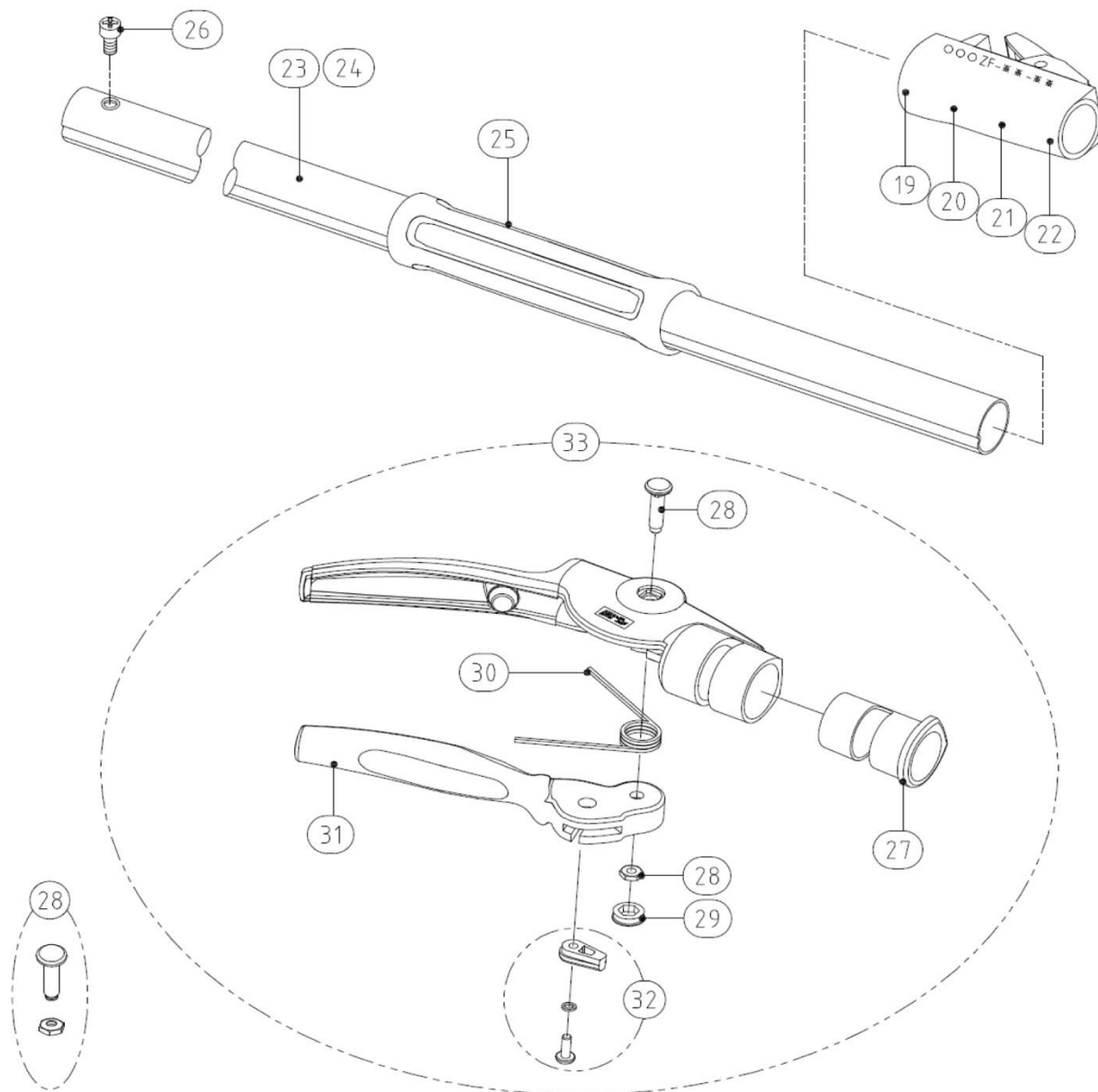


Blades: AR160ZR1 Blade Set for 160ZR/ 160ZF
AR160ZT1 Blade Set for 160ZT

Current: July 2017



1. ARSP334	Bolt/Washer/Nut 160ZR	11. ARSP462	Steel band for 160/ 180ZF-3.0-5
2. ARSP44	Rod fixing bolt & nut for 160/ ZF series	12. ARHPZF203	Steel band set for 160/180ZR-2.0-3
3. ARSP351	Holding Device for Cutting Blade w/2 screws 160ZR	13. ARHPZF305	Steel band set 160ZF
4. ARSP352	Holding Device for Counter Blade w/2 screw 160ZR	14. ARSP463	Upper Pipe for 160/ 180ZF-2.0-3
5. ARSP353	Screw for 160ZR (4 pcs)	15. ARSP464	Upper pipe for 160/ 180ZF-3.0-5
6. ARSP335	Inner Case for ZR Series	16. ARSP465	Blade fixing part for ZF series
7. ARSP459	Rod for 160/180ZR-2.0-3	17. ARSP466	Washer plate for blade fixing part of ZF series
8. ARSP460	Rod for 160/ 180ZF-3.0-5	18. ARSP399	Screw for the blade fixing part of 160R/ 180R/ ZF series (2PCS)
9. ARSP338	Rod Fixing Part for ZR Series	19. ARSP467	Joint case set for 160ZF305
10. ARSP461	Steel band only for 160/ 180ZF-2.0-3	20. ARSP468	Joint case set for 160ZF305
		24. ARSP472	Lower pipe for 160/ 180ZF305

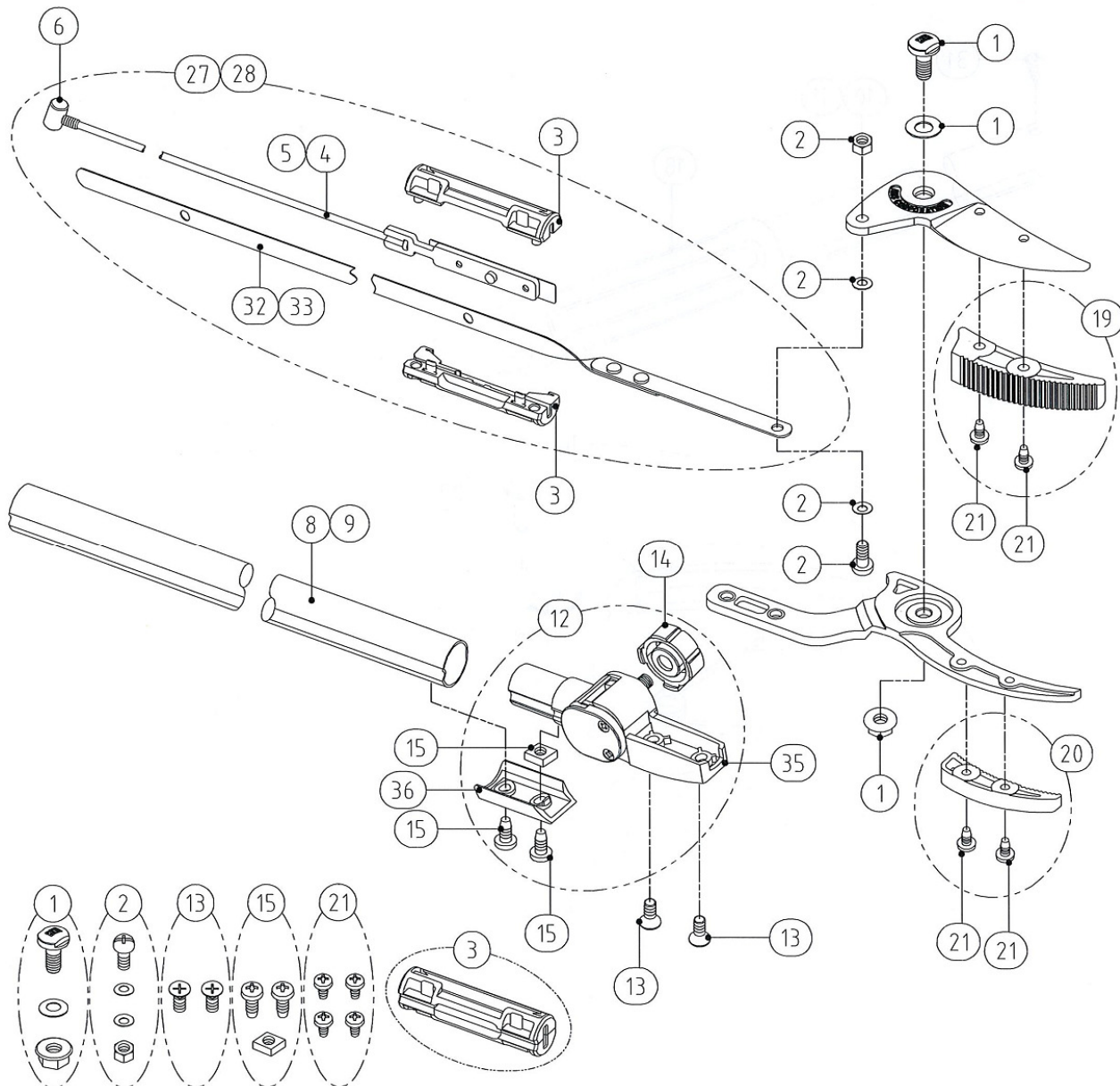


- | | |
|-------------|--|
| 25. ARSP350 | Middle Grip for 160/180ZR |
| 26. ARSP452 | Stop screw for the handle of 180LR/ ZF series |
| 27. ARSP339 | ARS Sleeve for Grip of ZR Series |
| 28. ARSP379 | Centre Bolt & Nut for 160ZR grip |
| 29. ARSP414 | Nut cap for the handle ZR/ZF/160R/180R/ 180LR series |
| 30. ARSP41 | Spring Long Arm Pruners |
| 31. ARSP349 | Grip Lever Only for 160/180ZR/ ZF series |
| 32. ARSP380 | Handle Latch Lock Set For 16ZR/ ZF series/ 180R/ 180LR |
| 33. ARSP348 | Grip Set for 160/180ZR/ ZF series/ 180R/ 180LR series |

Parts Diagram for AR160ZR Series Long Arm Pruners

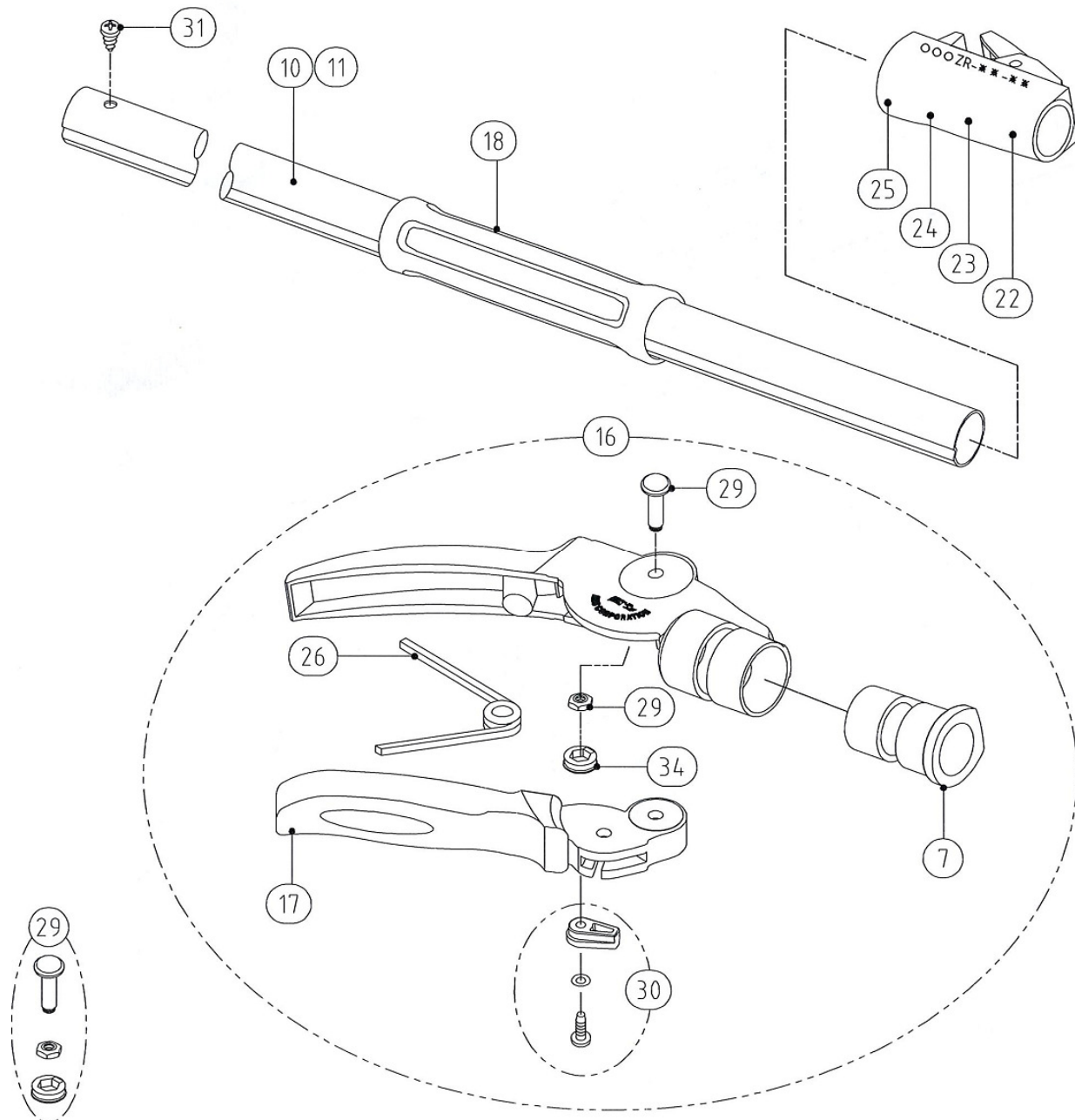


Blades: AR160ZR1 Blade Set for 160ZR
AR160ZT1 Blade Set for 160ZT



1. ARSP334	Bolt/Washer/Nut 160ZR	19. ARSP351	Holding Device for Cutting Blade w/2 screws 160ZR
2. ARSP74	Screw/Nut/Washer for Hoop	20. ARSP352	Holding Device for Counter Blade w/2 screw 160ZR
3. ARSP335	Inner Case for ZR Series	21. ARSP353	Screw for 160ZR (4 pcs)
4.	Rod for 160/180ZR-2.0-3	27.	Steel band set for 160/180ZR-2.0-3
5. ARSP337	Rod for 160ZR-3.0-5	28. ARHPZR305	Steel band set 160ZR
6. ARSP338	Rod Fixing Part for ZR Series	32.	Steel band only 160/180ZR-2.0-3
8.	Upper Pipe for 160/180ZP-3.0-5	33.	Steel band only 160/180ZR-3.0-5
9. ARSP341	Upper Pipe for 160ZR	35.	Tilt case only, for ZR Series
12. ARSP344	Tilt Case Set for 160/180ZR	36.	Tilt case fixing plate w/o screws
13. ARSP345	Screw to attach cutting blade - ZR		
14. ARSP346	Dial Nut for 160/180ZR		
15. ARSP347	Screw for 160/180ZR (2pcs)		

*Parts in grey not stocked



7. ARSP339	ARS Sleeve for Grip of ZR Series	24.	Joint Case set for 180ZR- 2.0-3
10.	Lower Pipe only 160/180ZR 2.0-3	25.	Joint Case set for 180ZR- 3.0-5
11. ARSP343	Lower Pipe for 160ZR	26. ARSP41	Spring Long Arm Pruners
16. ARSP348	Grip Set for 160/180ZR	29. ARSP379	Centre Bolt & Nut for 160ZR grip
17. ARSP349	Grip Lever Only for 160/180ZR	30. ARSP380	Handle Latch Lock Set For 16ZR
18. ARSP350	Middle Grip for 160/180ZR	31. ARSP381	Stop Screw For 160ZR
22.	Joint Case set for 160ZR – 2.0-3	34.	Nut cap for the handle
23. ARSP355	Joint Case for 160ZR		

*Parts in grey not stocked